

DISA SMC



DISA SMC - Optimum sand quality



DISA SAM mixer with DISA SMC

DISA SMC - In-mixer sand analysis

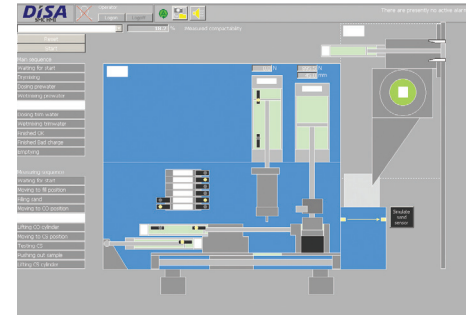
Sand quality is the key to mould quality and thus to high performance production of quality castings.

Designed for use with the DISA mixers and high-capacity mixers, the DISA SMC regulates and monitors the process in the sand mixer and ensures that the characteristics of the prepared moulding sand remain within a constant range. The regulation is automatic and continuous by in-mixer analysis of the sand during mixing.

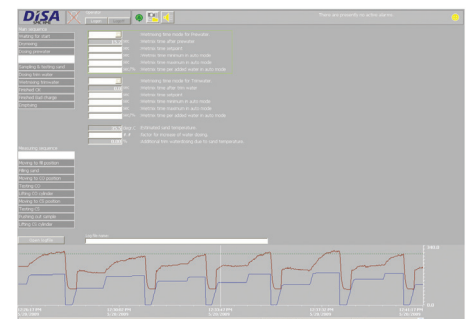
Analyses are based on accurate measurements of compressibility and sand strength as well.

Key advantages

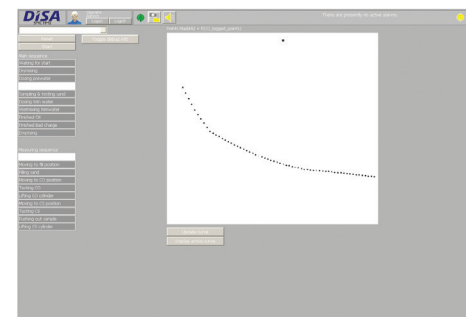
- Improved sand quality control with in-line automatic laboratory testing of each batch.
- Precise water addition based on compressibility requirements and not just moisture content.



Overview of SMC sequence



Curves showing compactability and water dosing!



Trend curve of mixer sequence

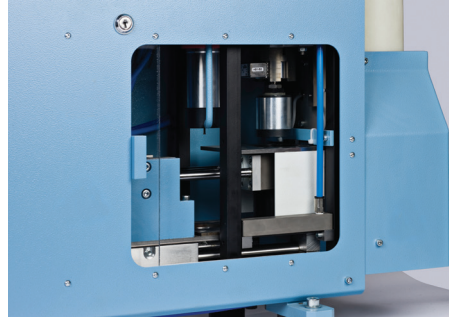
Key features

- Up to 99 different recipes and 3 different sand types content.
- Online monitoring and control with Siemens S7 PLC.
- Automatic bad batch rejection.
- Compact independent unit ready for easy installation.
- Compatible with most types of high-capacity mixers.

The DISA SMC process



DISA SMC



Sand sample testing



Water dosing panel

Optimum sand quality in each batch

The purpose of the DISA SMC is to control the sand preparation process in a batch mixer.

Based on a \varnothing 50 mm sand test sample the compactability and sand strength are measured directly.

The basis for the required sand properties is defined by the operator via a recipe editor.

Compressibility

The compressibility determines the quantity of water to be added into the mixer by a water dosage system.

The DISA SMC adjusts the water addition to attain the required compressibility, and compensates automatically for changes in the sand properties.

Sand strenght

From the sand strength measurements, the SMC adjusts the bentonite in small increments in following batches towards a target sand strength.

DISA SMC versions

The DISA SMC can be delivered in two versions: integrated or stand alone.

Integrated: If a DISA mixer is delivered the mixer comes with a control system that also controls the SMC. The mixer also comes with a water dosing unit (see picture).

Stand alone: For other mixers the DISA SMC is delivered with it's own control system and a water dosing unit.

Programming

The DISA SMC programme monitors and displays all relevant alarms and has a logging system which stores all relevant SMC values for each batch.

DISA Industries A/S

Højager 8
2630 Taastrup
Denmark

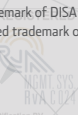
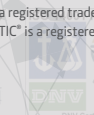
We are Norican: DISA | Italpresse Gauss | StrikoWestofen | Wheelabrator
www.noricangroup.com

T: +45 44 50 50 50
E: info@disagroup.com

www.disagroup.com



DISA® is a registered trademark of DISA Holding A/S.
DISAMATIC® is a registered trademark of DISA Industries A/S.



DISA
A Norican Technology