



## Production Scheduler

AI-based scheduling solution that optimizes production plans, increases throughput and improves on-time delivery

### OVERVIEW

Production Scheduler automatically schedules work orders to optimize production, connects planning and scheduling with the factory floor, and optimizes factory resources such as materials, human resources, equipment, machines and tools.

Production Scheduler, part of Plataine's TPO (Total Production Optimization) suite of applications, uses AI-based algorithms to generate an optimal schedule while leveraging historical and real-time data, bottleneck prediction, equipment efficiency and expected duration for tasks, to continuously improve the schedule, enhance throughput and on-time delivery.



Automatically produces optimal & valid schedule



Quickly reacts to unexpected events on the factory floor



Fully synchronized with shop floor execution

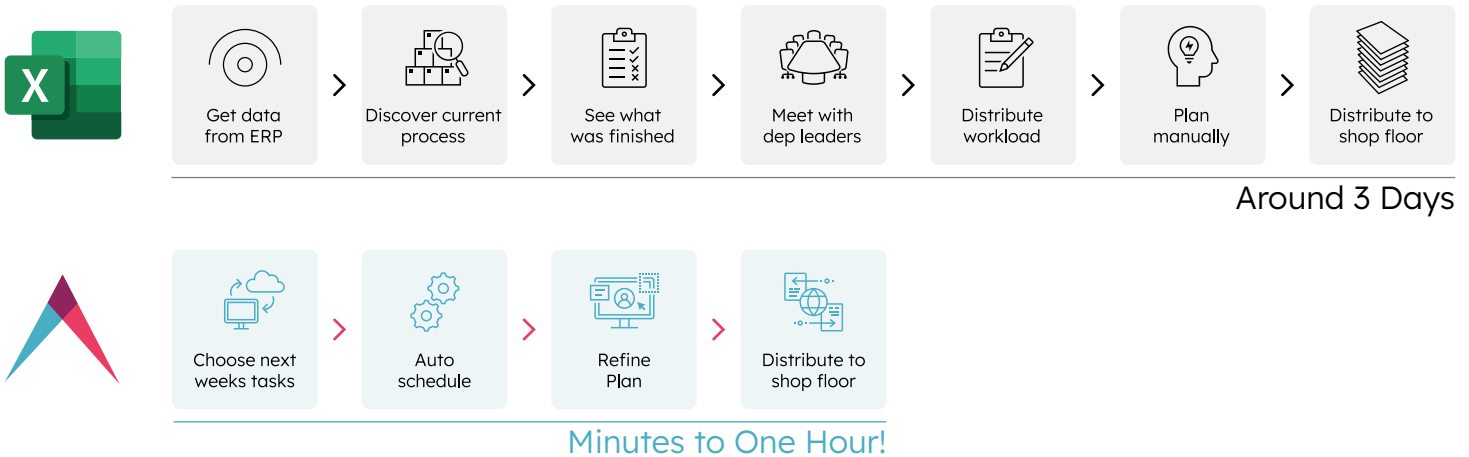
## Benefits

- Increases factory throughput and on-time delivery
- Drives factory resources efficiency
- Provides real-time production floor visibility
- Reacts to unexpected events on the fly, keeping the plan up to date
- Offers quick auto-scheduling and optimized resource utilization

## Key Features

- Automatically generates an optimal production schedule
- Multi-dimensional capacity driven plan and automatic task validation
- Large scale scheduling in complex environments
- Real-time production progress monitoring and alerts
- Seamlessly integrates with existing systems (e.g. ERP, MES)
- Easy to use, intuitive user interface

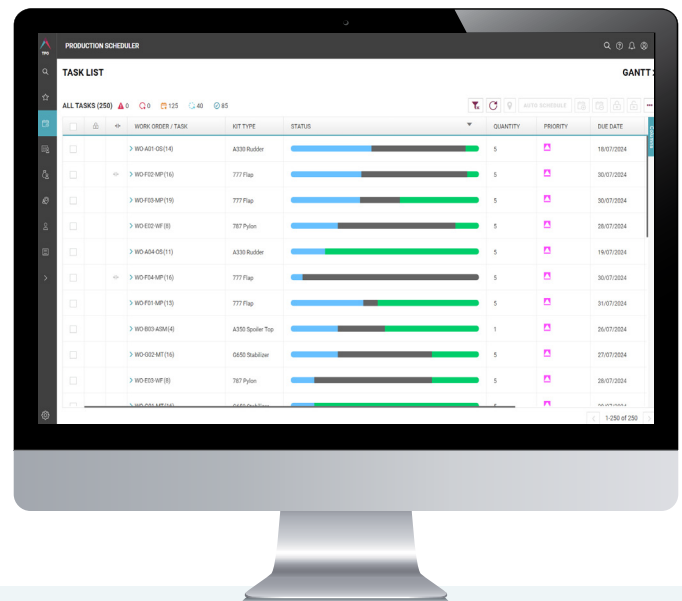
## Meet Your Production Goals with Plataine



## Product Features

The Production Scheduler considers multi-dimensional resource availability, integrating data on materials, machinery, equipment and labor to ensure seamless coordination across the production process.

The solution generates real-time alerts to prevent missed production deadlines. Furthermore, the Production Scheduler enables goal driven scheduling objectives and comprehensive tracking features, enabling detailed comparison of planned versus actual production progress. All these lead to optimized schedules, production efficiency, and continuous improvement.



**ABOUT PLATAINE:** Plataine is the leading provider of Industrial IoT and AI-based optimization solutions for advanced manufacturing. Plataine's solutions provide intelligent, connected Digital Assistants for production floor management and staff, empowering manufacturers to make optimized decisions in real-time, every time. Plataine's patent-protected technologies are used by leading manufacturers worldwide, including Airbus, IAI, Triumph, MRAS (an ST Engineering company), Alestis, Kinenco-Kaman, IFS, Kanfit and Ethan Allen. Plataine partners with SAP, Microsoft, Siemens PLM, the Advanced Manufacturing Research Centre (AMRC) with Boeing, and CTC GmbH (an Airbus Company), and is also a part of the UK National Composites Centre (NCC) membership network, to advance the 'Factory of the Future' worldwide. For this work, Plataine has received Frost & Sullivan's 2021 Global Technology Innovation Leadership Award for its AI-Based Digital Assistants for Manufacturing, and Innovation Awards from the JEC. Plataine Received the SME 2021 Excellence in Composites Manufacturing Award and awards from CompositesUK organizations. Plataine is ISO 27001 certified for compliance with information security management requirements. For more information, visit: [www.plataine.com](http://www.plataine.com).